

**SHARP**<sup>®</sup>

AR (M) 355

AR (M) 455



## network **office** solutions

extraordinary power. multi-faceted performance. unparalleled versatility.

  
**scan<sup>2</sup>**  
Empowered with  
Scan<sup>2</sup> Technology

*Digital*  
**iMAGER**<sup>™</sup>  
Advanced Workgroup System

AR (M) 355N

AR (M) 355U

AR (M) 455N

AR (M) 455U

the newest **Sharp** enhancements

- › Scan<sup>2</sup> Technology increases productivity, enhances reliability, and preserves document integrity
- › 50-sheet **Duplex Single Pass Feeder** for incredible efficiency
- › True **multi-tasking** engine controller
- › **Document filing** system enables users to easily archive documents (Standard on N models)
- › 40 GB Hard Drive offers heightened speed and processing power (standard on N models)
- › TIFF and PDF Direct Printing
- › Tandem Copy/Print capability (Standard on N models)
- › Permanent Font and Form storage
- › Carbon Copy Print mode
- › **Auto Duplexing** on stocks up to 97 lb. index from three different paper trays
- › IP/MAC Address Filtering with **security-enabled NIC** card
- › LDAP support with optional Network Scanner Expansion Kit
- › Unique File Naming using the QWERTY keyboard
- › PC Fax and Internet Fax capability with optional Super G3 Facsimile Expansion Kit
- › Standard IEEE1284 and USB 2.0 ports
- › New **Card Shot** feature conveniently copies both sides of an ID card onto a single sheet of paper
- › Additional features include advanced job build, x-y zoom, dual page copy, cover pages, negative image, mixed image, image stamp, department control, and more.



## setting the standard for multi-tasking and productivity.

In today's business, you need to stay one step ahead. With Sharp's newly designed AR-M355/M455 Digital IMAGER™ MFPs, it's never been so easy. Best-in-class multifunction features allow you to get more done—in considerably less time. With powerful copy, print, scan, and fax capabilities, these multi-faceted performers will become the heart of your workgroup—and the center of productivity. Versatile input and output features enable workgroups and busy departments to adopt a truly digital workflow—and share information more efficiently and cost effectively. Sophisticated software helps you manage, edit and distribute digital files—simply and securely. Available in both N and U models, Sharp makes it easy to select the IMAGER that fits your needs today—while providing the flexibility you need as your business grows.

**Create it. Scan it. Store it. Send it. Now you can do it all with Sharp's new multi-tasking AR-M355/M455 Digital IMAGERS.**



**SHARP®**

# uncompromised productivity that gets the job done.

## Do more than you ever thought possible.

Designed for busy mid-volume environments, Sharp's AR-M355/M455 IMAGERS are redefining productivity. With copy/print speeds of 35/45 ppm and an available online paper capacity for 3,100 sheets, these powerful performers can do so much more—in considerably less time.

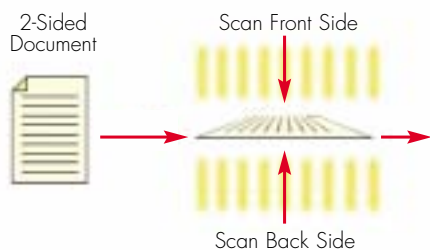
## Impressive performance.

With a newly engineered, high-performance engine controller and Scan-Once, Print-Many technology, the AR-M355/M455 IMAGERS deliver crisp **600 dpi resolution** for superior quality output. But that's just the beginning. The new **50-sheet Duplex Single Pass Feeder and Sharp's innovative Scan<sup>2</sup> Technology** scans both sides of a 2-sided document in one pass—minimizing paper misfeeds and improving reliability. Documents are scanned with amazing speed—so even large projects are completed in a snap.

Need versatility? The AR-M355/M455 IMAGERS offer enhanced paper handling, enabling you to print on a wide variety of paper stocks and sizes—so you can minimize outsourcing—and reduce production costs.

The AR-M355/M455 IMAGERS also offer **Network Tandem Printing**—without the hassle of special cables.\* You can easily “connect” two AR-M355/M455 IMAGERS—even if they are in different locations—and print simultaneously. Plus, each IMAGER doesn't have to be configured the same way—enabling you to Tandem Print with just a few keystrokes—quickly and easily. Use Tandem Printing to print documents concurrently at different locations, or to maximize your IMAGERS during busy periods.

*Efficient, two-sided copying speeds up your workflow with the 50-sheet Duplex Single Pass Feeder.*



*Scan<sup>2</sup> Technology scans both sides of a document simultaneously, minimizing paper misfeeds dramatically.*



*The user-friendly touch screen LCD display with icon-driven graphics simplifies sophisticated features (IN model shown)*

\*Standard on N Models, optional on U models

### Powerful network printing with point-and-click simplicity.

For powerful print functionality, the Sharp AR-M355/M455 N model IMAGERs offer a powerful 300 MHz PCL6 Printing System, enabling them to be the hub of productivity in busy workgroups. With a **40 GB Hard Drive**, the Sharp AR-M355N/M455N IMAGERs offer heightened speed and processing power to jump-start your productivity. New standard features include:

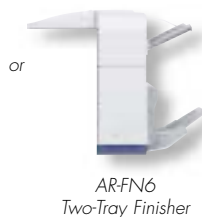
- › **Pull Printing** for browse-to-file printing at the IMAGER from an authorized FTP site
- › **Carbon Copy Print** mode automatically produces forms in triplicate, utilizing different colored sheets of paper
- › **Duplex Printing** on up to 97 lb. index from available multi-purpose trays enables you to produce a variety of documents in house
- › **TIFF and PDF Direct Printing** enables you to efficiently print PDF and TIFF files with drag and drop simplicity (not available on all operating systems)
- › **Permanent Font and Form Storage** for speedy printing
- › **Security-enabled NIC Card** to restrict user access with IP/MAC Address Filtering and enhanced protocol security

### Professional finishing capabilities deliver exceptional results.

With a choice of optional high-performance finishers, producing professionally-finished output is as easy as 1-2-3. Additionally, you can save time—and money—by minimizing outsourcing. The capability of on-demand, on-the-fly finishing enables everyone in your workgroup to create proposals, handouts, newsletters, and more—that easily rival the results of professional quick-print establishments.

Select from either the **Two-Tray Finisher** or the **Saddle-Stitch Finisher**, which deliver a wide range of capabilities including 3-position stapling, center folding, 50-sheet stapling capacity, and more. For even more versatility, add the **Mail Bin Stacker** which offers a 250-sheet face-down delivery tray, as well as seven 100-sheet mail bins to help you organize your output.

### Professional Finishing Options



Standard Tandem Printing  
(on N model IMAGERs) can reduce  
mail and outsourcing costs.

# protect your business with Sharp's advanced security.

## The right security for your business.

To help secure your electronic documents and restrict access, the AR-M355/M455 IMAGERs offer several levels of network and data security to protect valuable data. A leader in office equipment security, Sharp enables IT professionals to safely deploy digital copying, printing, scanning and faxing—in any business or government environment.

- To **protect your printed documents** from unauthorized viewing, the AR-M355/M455 IMAGERs offer a Confidential Print feature, which requires users to enter a PIN code in order to print their queued document (Standard on N models).
- To **protect your network** from unauthorized e-mail communications, the AR-M355/M455 IMAGERs support User Authentication which requires users to log in before performing any network scanning operations (Requires optional AR-NS3 Network Scanning Kit).
- To **restrict access** to the AR-M355/M455 IMAGERs on your network, the IMAGER Home Page offers IP/MAC Address Filtering and protocol control (Standard on N models).

- To **protect your data**, you can add the optional Data Security Kit, which encrypts document data using 128 bit encryption (Including document filing area on N models). Additionally, the Data Security Kit sanitizes the memory in your AR-M355/M455 IMAGERs by overwriting the encrypted data, offering an unprecedented level of assurance (Available early 2005).

These scalable security offerings aim to protect your intellectual property, preserve confidential information and enable you to meet regulatory requirements, such as the Health Insurance Portability and Accountability Act (HIPAA) and the Gramm Leach Bliley Act (GLB). For additional information visit

[www.sharppusa.com/security](http://www.sharppusa.com/security)

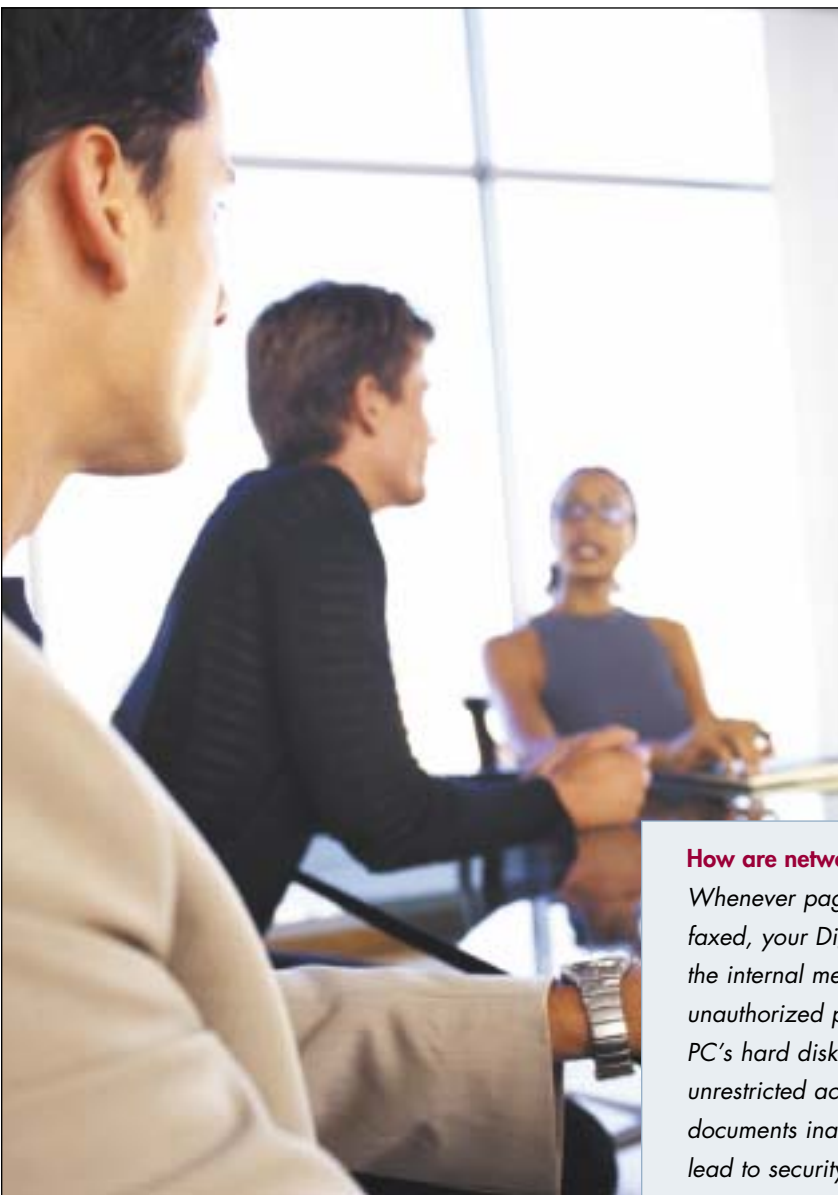


IP/MAC Address Filtering on the IMAGER Home Page enables you to restrict access to the IMAGER.

A dialog box titled 'USER AUTHENTICATION' with a blue background and a white border. It contains four input fields: 'LOGIN NAME', 'SENDER NAME', 'E-MAIL ADDRESS', and 'PASSWORD'. To the right of the 'SENDER NAME' field is a button labeled 'SELECT FROM SENDER LIST'. At the top right of the dialog is an 'OK' button. The dialog is designed to be user-friendly and secure, with clear labels and a simple layout.

User Authentication requires users to log in to the machine before performing any network scanning operations, protecting it from unauthorized scanning and e-mail communications.





## get the facts

### How are networked MFPs vulnerable?

Whenever pages are printed, copied, scanned or faxed, your Digital IMAGER MFP retains data in the internal memory, which can be retrieved by unauthorized personnel just like the data on any PC's hard disk. Additionally, internal users who have unrestricted access to the IMAGER, or even sensitive documents inadvertently left in the paper tray, can lead to security breaches and information leaks.

### Is your confidential information vulnerable?

Yes. Whether it's personal or financial information, health records, or protecting sensitive corporate data, it's critical to deploy a solution that provides heightened security and minimizes risk. Plus, with new federal regulations regarding privacy and confidentiality, information and document security have become a high priority for every business.

Get the security solutions you need along with the outstanding reliability you expect—with Sharp's new AR-M355/M455 Digital IMAGERs.



More information about Sharp's leading-edge security features can be found on [www.sharppusa.com/security](http://www.sharppusa.com/security)

scan it. save it. send it.  
it really is that easy.

#### Powerful and flexible network scanning

Share documents—across the network—or across the world—with versatile scan functionality. With Sharp's **ImageSEND** feature, the AR-M355/M455 IMAGERs truly become the document distribution hub of the workgroup—providing both input and output capabilities. To scan, simply load your document into the **Duplex Single-Pass Feeder**, and then send your files directly from the IMAGER's control panel to six different destinations—Send to Desktop, Send to E-mail, Send to FTP, Send to Group, Send to Fax and Send to i-Fax. ImageSEND allows for a truly digital workflow, providing incredible convenience, speed and increased efficiency.

#### Innovative document filing

Designed to be the center of the workgroup, the new AR-M355/M455 N model IMAGERs offer **Standard Document Filing**. A robust **Hard Drive** with 16 GB of document filing space can store frequently used files like forms and templates. With up to 20,000 pages of storage capacity, everyone on the network can share and access documents in a snap. Plus, enhanced security features require users to enter a PIN number to access secure folders—protecting your sensitive data.

#### Convenient LDAP support

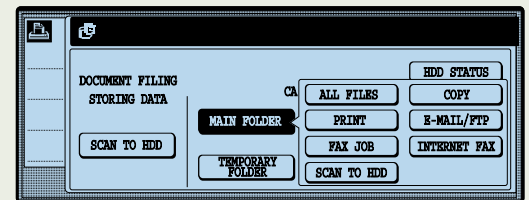
With innovative **LDAP support** (Lightweight Directory Access Protocol), there's no need to manually enter a recipient's address. Simply enter the first few characters of the address and the AR-M355/M455 IMAGERs automatically search and display a list of matching names. And to reduce the risk of unauthorized scanned documents being e-mailed, integrated **User Authentication** requires users to log in before searching for an address and sending an outbound e-mail (Requires optional Network Scanning Kit).

#### Unique file naming

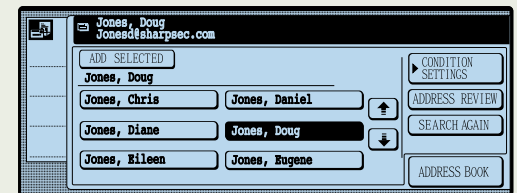
The new AR-M355/M455 IMAGERs also support **Unique File Naming**, giving you the ability to enter specific filenames with customized message and subject fields (Requires optional Network Scanning Kit).

#### Intelligent Application Integration

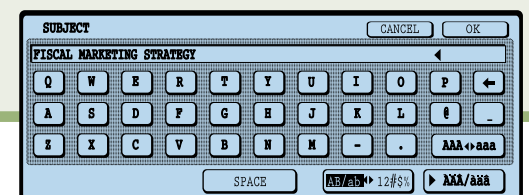
To help you manage your workflow, Sharp's flexible **Application Integration Module** allows you to add information fields to your scanned documents, thereby automating tasks that once took several steps. This information is passed along with your document to an integrated application, enabling you to initiate your workflow right from the the AR-M355/M455 IMAGERs touch-screen panel (Available early 2005).



Standard built-in document filing makes it easy to share and store your scanned files. Up to 20,000 letter-size pages can be stored.



With LDAP, users only need to enter the first few characters of the destination e-mail address—so sending a file is incredibly quick.



Unique File Naming makes it easy for the recipient to recognize e-mailed documents.



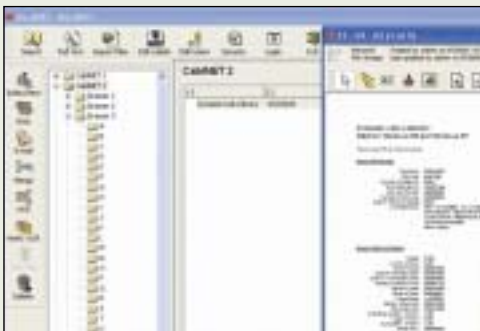
Sharp's PC-fax driver allows users to fax directly from the desktop—or an application—quickly and easily.



Sharpdesk Desktop Document Management Software helps users organize, annotate, edit and combine files prior to distribution.



Sharp's alliances with leading developers make it easy to implement enterprise-level solutions for document archiving, forms generation, and more.



### Versatile, built-in faxing

With lightening-fast speed, the powerful **Super G3 Fax Expansion Kit** provides incredible performance and versatility for high-volume environments.

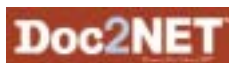


The innovative **PC-fax driver** enables users to fax documents directly from the desktop—saving time. Other powerful features include internet fax capability (optional Network Scanner Expansion Kit required), single-pass duplex transmission of documents, simultaneous fax transmission and sequential broadcasting.

### Managing digital files has never been easier—and more seamless.

Powerful, flexible and intuitive, **Sharpdesk™** Document Management Software enables you to easily integrate scanned documents into your everyday workflow. Easy-to-use tools help you organize, edit—even combine scanned files—for maximum productivity. The **Full Text Search** feature enables you to retrieve archived documents with incredible ease.

For advanced document filing and archiving, Sharp's AR-M355/M455 IMAGERs are compatible with Liberty IMS **Doc2NET™**, an enterprise-level solution that enables users to capture, organize, as well as retrieve documents. With structured indexing and full text search capabilities, Doc2NET delivers quick and convenient access to shared documents for the entire workgroup—not to mention increased efficiency.



# manage your workflow with advanced, easy-to-use software.

## The Sharp Administration Utility Suite

To help you manage the ARM355/M455 IMAGER's versatile features, Sharp designed the Administration Utility Suite, a collection of easy-to-use software that can simplify the installation, monitoring, and usage of your Sharp IMAGERs.

- › Network users can view printer conditions through the **Printer Status Monitor's** easy-to-use interface. Check paper levels, toner, and more before you send your job.
- › **Printer Administration Utility** helps IT Managers speed up installation and configuration of printers on the network—as well as monitor any networked SNMP-compliant printers.
- › IT Managers, Key Operators, and Authorized Sharp Dealers can automatically receive e-mails regarding the ARM355/M455 IMAGERs with Sharp's **Remote E-mail Diagnostics**.
- › Get advanced web-based management for both user and administrator-level access with the **IMAGER Home Page**. Users can easily create and manage their own network scanning destinations and profiles. Administrators can access device configuration, network settings, IP filtering, and protocol control—right from the convenience of the desktop.



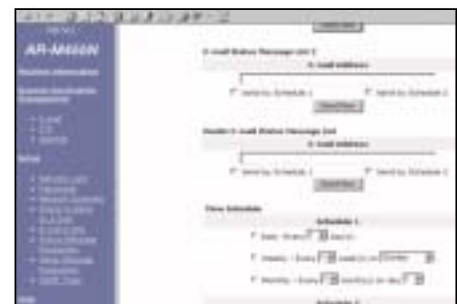
Printer Administration Utility



Printer Status Monitor



IMAGER Home Page



Remote E-Mail Diagnostics

**Track and monitor printer activity**

The AR-M355/M455 IMAGER's versatile functionality will make it the most widely-used printer in the workgroup. To monitor printer usage, Sharp includes standard copy/print accounting controls. The **Print/Copy Auditor** enables administrators and IT Managers to track usage by ID number (up to 500 accounts) as well as by PIN code authorization. For automated cost accounting, **SharpAccountant** enables you to track and monitor your IMAGER's activity by account code, device, and function. And for seamless expansion on an enterprise level, the AR-M355/M455 IMAGERs support **Equitrac's® PrintLog Accounting Server**, which provides extensive reporting and security controls.

Keep your workflow moving when it matters most—crunch time. Manage all the printers on your network and control document output—right from your desktop—with **Callisto™ Software**. Powerful **print queue management** capabilities and **detailed usage reports** enable IT Managers to monitor printer activity—even redirect jobs to maintain the workflow—all from one application.

For **automated forms management** and distribution, Sharp's AR-M355/M455 IMAGERs integrate fluently with **Reform Enterprise** by FabSoft.™ With the ability to automatically route documents to a fax or e-mail address, MFP, printer, or FTP site—Reform speeds up your workflow and saves valuable time. Plus you can customize forms, invoices, and other transactional documents, enabling you to automate processing while maintaining a professional image.

**Advanced LAN/Enterprise Management**

The AR-M355/M455 IMAGERs offer extended compatibility for the enterprise. Sharp's alliances with providers of industry-leading EMS software ensure that your IMAGERs will work seamlessly with your existing network.

**My Sharp**

And to make managing your new AR-M355/M455 IMAGERs simple and easy, ask your Authorized Sharp dealer about **My Sharp**. This dedicated customer-training website is customized to your IMAGER, and allows you to locate resources and find information specific to your configuration (available early 2005).



Sharp offers several software enhancements to extend the functionality of your IMAGER, and leverage your investment.

**Main Specifications**

Base Models:	AR-M355N/M455N: includes multi-tasking controller, 40 GB Hard Drive, and PCL6 Network Printing System AR-M355U/M455U: includes multi-tasking controller (available February 2005)
Type:	Console, modular digital document system
Functions:	Copy, print, network print, network scan, and fax <sup>1</sup>
Copy System:	Dry electrostatic transfer system
Exposure Source:	Xenon lamp
Photoconductor:	OPC
Developer Type:	Dual component / magnetic brush development
Fusing System:	Heat roller
Originals:	Sheets, bound documents
Original Size (Max):	11" x 17"
Copy Size:	Min. 5 1/2" x 8 1/2", Max. 11" x 17"
Copy Speed:	35/45 copies per minute (8 1/2" x 11: Standard resolution)
Continuous Copy:	Max. 999 copies
First Copy Out Time:	4.9/4.4 Seconds (document glass); 6.0/5.3 Seconds (DSPF) (Based on letter size original with polygon motor running)
Warm-Up Time:	80 seconds or less
Magnification Range:	25% to 400% in 1% increments (with DSPF 25%-200%)
Fixed Magnification:	25%, 50%, 64%, 77%, 100%, 121%, 129%, 200, 400%
Original Feed System:	50-sheet duplex single pass feeder (DSPF) with original size detection (30 sheets for ledger/legal size)
Scan Speed:	Up to 45 OPM (letter size/standard resolution/1 side)
Original Sizes:	5 1/2" x 8 1/2", 8 1/2" x 11", 8 1/2" x 11" R, 8 1/2" x 14", 11" x 17" (15-34 lbs.)
Paper Feed System:	Standard: (1) 500-sheet 8 1/2" x 11" paper cassette Optional: (1) 2,500-sheet Multi-purpose desk (500-sheet MP drawer + 2,000 sheet letter size drawer, or (1) 1,500-sheet paper drawer (1 MP + 2 letter/legal/ledger drawers), or (1) 500-sheet MP drawer + optional cabinet.
Paper Type:	Standard and optional letter size paper drawers: 16-28 lb. plain bond paper. Other paper types include recycled, pre-printed, pre-punched, color, and letterhead.
Multi-purpose Drawers:	Plain paper (16-34 lbs.), letter/legal/ledger/statement size paper, index paper (97 lbs.), cover paper (54-55 lbs.), transparency film (20 sheets), letterhead, envelopes, and labels.
Duplexing:	Optional duplex module AR-DU3, non-stacking duplexing unit or AR-DU4, non-stacking duplexing unit with 100-sheet manual bypass tray). Bypass paper types: plain paper (16-34 lbs.), tracing paper 14-15 lbs (single feed), index paper (97 lbs.), cover paper (54-55 lbs.), transparency film (20 sheets), letterhead, envelopes, and labels
Interface:	IEEE1284 parallel port, USB-2.0, RJ-45 (N models)
Controller Type:	300 MHz Multi-tasking
Memory (total):	128 MB shared, expandable to 384 MB with 256 MB DIMM
Hard Disk Drive:	40 GB; 16 GB for document filing/24 GB for enhanced copy, print, and scan operations (standard on N models)
Copy Resolution:	Scan: 600 dpi; Copy output: 1200 dpi (equivalent)
Exposure Modes:	Text, text/photo, photo; auto; 9 step manual
Half-tone:	256 gradations/2 levels
Copy Features:	Scan-Once Print-Many, electronic sorting, Auto Paper Sensing (APS), Auto Magnification Sensing (AMS), auto tray switching, X-Y zoom, reserve copy, tandem copy (N models), book copy, margin shift, job build, edge erase, center erase, dual page copy, cover pages, insert pages, transparency insert, card shot, multi-shot, reverse image, mirror image, cover page, document filing (N models), department control, job programs, date stamp, character stamp, and page stamp.
Department Control:	AR-M355N/M455N: 500   AR-M355U/M455U: 500
Job Build:	10,000 sheets (N models); based on memory (U models)
Output Tray Capacity:	Main output tray (top) up to 400 sheets (face down)
Firmware:	Flash ROM with local and remote update Management
Power Requirement:	AC 100-127 VAC, 60 HZ, 16 Amps
Power Consumption:	AR-M355: Max 1440 W, pre-heat 139.75 W, sleep mode 15 W AR-M455: Max 1440 W, pre-heat 178.25 W, sleep mode 20 W
Weight:	Approx. 128.9 lbs. <sup>2</sup>
Dimensions:	37 29/32" (w) x 26 11/64" (d) x 44 23/64" (h) <sup>2</sup>

Design and specifications subject to change without notice.

Sharp is a registered trademark of Sharp Corporation.  
All other trademarks and registered trademarks are property of their respective holders.

**PCL6 Network Printing System (standard on N models)**

Emulation:	PCL6 (XL), PCL5e, optional PS3
Resolution:	1200 dpi (equivalent), 600 dpi, 300 dpi
Print Speed:	35/45 pages per minute (8 1/2" x 11")
Print Drivers:	Windows 95/98/ME, NT4.0, 2000, XP, MAC PPD (optional)
Software:	Print drivers, Printer Status Monitor, Printer Administration Utility
ROPM:	Yes (rip once print many)
Features:	Duplex printing, booklet print, binding edge, N-up printing, different cover page/last page, transparency inserts, carbon copy print mode, continuous printing, fit to page, watermarks, PIN printing, print hold, proof print, print auditor, print smoothing, font/form downloads, and PDF/TIFF direct print function. <sup>3</sup> (Note: some features not available on certain print drivers).
Resident Fonts:	80 outline fonts standard, barcode fonts (optional)
Network Interface:	RJ-45 Ethernet connection; 10/100 BaseT
Network Operating Systems:	Windows 95/98/ME/XP Professional/NT4.0/2000/2003 Server, Unix, Novell Netware 3.x/4.x/5.x, MAC OS 8.6, 9.2.2, 10.1.5, 10.2, 10.2.3 - 10.2.8, 10.3-10.3.3
Network Protocols:	TCP/IP for Windows and Unix environments, NetBEUI, IPX/SPX for Novell environments, and AppleTalk
Printing Protocols:	LPR, IPP, PAP, Raw TCP (port 9100), FTP, Novell NDS/ PServer/Rprinter
Network Security:	IP/MAC address filtering, protocol enable/disable

**Network Scanning Kit (option)<sup>4</sup>**

Max. Original Size:	11" x 17"
Optical Resolution:	600 dpi
Output Mode:	200 dpi, 300 dpi, 400 dpi, 600 dpi
Image Formats:	G3/G4 TIFF, TIFF-F, TIFF-FX, G3/G4 PDF
Image Compression:	Uncompressed, G3 (MH), G4 (MH/MMR)
Scan Destinations:	E-mail, Desktop, FTP, Print, URL, Internet fax/G3 fax <sup>5</sup>
One-touch:	Up to 999 destinations
Group Destinations:	Up to 500
Number of Senders:	Up to 999
Operating System:	Windows 95/98/ME, NT4, 2000, XP
Network Protocols:	TCP/IP (includes SMTP, LDAP, FTP, POP, ESMTMP)
Scan Security:	E-mail server user authentication, scan restriction
Configuration Method:	Web-based with user/administrator level login security
Software:	Sharpdesk Document Management Software (10 user license)

**Two-Tray Finisher (option)**

Type:	Desktop finisher with dual exit trays (mounts on right side)
Output Trays:	Upper tray: Exit tray / Lower tray: Offset stack tray
Output Capacity:	Upper tray: 500 sheets (letter), also supports legal, ledger, statement size; Lower tray: 750 sheets (letter)
Output Delivery:	Face down
Stapling Media:	Plain paper, letter size
Stapling Positions:	1 front, 1 rear, or both
Max. Pages for Stapling:	30 sheets (letter size)
Dimensions:	18 7/64" (w) x 20 55/64" (d) x 20" (h)

**Saddle-Stitch Finisher (option)**

Type:	Console finisher with dual exit trays (mounts on left side)
Output Trays:	Upper tray: Offset stack tray / Lower tray: Book tray for saddle stitch
Output Capacity:	Upper/lower tray: 1000 sheets (letter)/500 sheets (legal/ledger), also supports statement size
Staple/Sort Capacity:	Up to 50 sets (up to output capacity above)
Output Delivery:	Face down
Stapling Media:	Plain paper, letter/legal/ledger size or mixed letter/ledger
Stapling Positions:	1 front, 1 rear, or both
Saddle-Stitch Function:	Center stitch/center folding (2 staples) letter/ledger paper sizes
Saddle-Stitch Sets:	Up to 10 sets (6-10 sheets)/up to 20 sets (1-5 sheets)
Max. Pages for Stapling:	50 sheets (letter size)/25 sheets (legal/ledger size)
Hole Punching:	Optional hole punch unit AR-PN1B (2 holes/3 holes)
Dimensions:	24 29/64" (w) x 23 47/64" (d) x 39 23/64" (h)

**Mail Bin Stacker (option)**

Type:	Desktop mail bin stacker with 8 tray exit (mounts on right side)
Output Trays:	Upper tray: Exit tray; Lower tray: 7 mail bins
Output Capacity:	Upper tray: Up to 250 sheets (letter), also supports legal/ledger/statement; Lower tray: Up to 100 sheets per bin (letter), also supports legal/ledger
Output Delivery:	Face down
Dimensions:	18 15/16" (w) x 20 55/64" (d) x 20" (h)

**Super G3 FAX Kit (option)**

Transmission Mode:	Super G3, G3
Modem Speed:	33.6 KBPS <sup>6</sup>
Compression:	JBIG, MMR, MR, MH
Scanning Method:	Sheet fed simplex or duplex or book
Max. Resolution:	400 DPI (ultra-fine)
Transmission Speed:	Approximately 2 Seconds with JBIG <sup>7</sup>
Auto-Dial Destinations:	Up to 999 (N models); Up to 500 (U models) <sup>8</sup>
Group Destinations:	Up to 500 (N models); Up to 300 (U models)
Long Length Originals:	Up to 31.5" (for transmission)
Programs:	8 profiles
Memory:	2 MB standard/10 MB max. (8 MB option)
Half-tone:	256 levels
Timer functions:	Up to 50 jobs
Features:	F-Code transmission/reception, transmit/receive polling, relay broadcasting, quick on-line, transaction reports, activity reports, anti-junk fax reception, out of paper memory reception, rotate transmit, and PC fax (with Network Printing System)

**Optional Equipment**

AR-EF3	Scanner module <sup>8</sup>
AR-RK2	Scanner rack <sup>8</sup>
AR-D27	1,500-sheet paper drawer (1 MP + 2 letter/legal/ledger) <sup>8</sup>
AR-D28	2,500-sheet paper desk (2,000-letter + 500-sheet multi-purpose) <sup>8</sup>
AR-MU2	500-sheet multi purpose drawer (requires AR-45ABD cabinet) <sup>8</sup>
AR-45ABD	Cabinet <sup>8</sup>
AR-DU3	Standard duplexing unit (required for AR-FN7)
AR-DU4	Duplexing unit with 100-sheet bypass tray
AR-TE3	Exit tray (left exit)
AR-TE4	Upper exit tray (right exit)
AR-TE5	Right side cabinet/exit tray
AR-FN6	Two-tray finisher (right side mount)
AR-FN7	Saddle-stitch finisher (left side mount)
AR-PN1B	Hole-punch unit (for AR-FN7)
AR-MS1	Mail bin stacker (right side mount)
AR-P21	PCL6 Network Printing System and 40 GB Hard Drive with Document Filing (standard on N models) <sup>9</sup>
AR-PF1	Bar code font kit <sup>4</sup>
AR-PF2	Macro font flash ROM (option for U models)
AR-PK6	Postscript level 3 kit <sup>4</sup>
AR-NS3	Network scanning kit <sup>4</sup>
AR-FX12	Super G3 fax kit
AR-MM9	8 MB fax upgrade memory

**Supplies**

AR-455MT	Toner Cartridge
AR-455MD	Developer
AR-455DR	Drum cartridge

<sup>1</sup> Some features require optional equipment

<sup>2</sup> Includes scanner, scanner rack, and multi-purpose desk

<sup>3</sup> Supports PCL/Text, TIFF, PDF, and PS3 files; requires AR-NS3 and AR-PK6

<sup>4</sup> U models require AR-P21 option

<sup>5</sup> Requires optional AR-FX12 Super G3 facsimile expansion kit.

<sup>6</sup> A combined total of 200 send-to-FTP and send-to-Desktop destinations can be stored.

<sup>7</sup> Based on ITU Test chart #1 in standard resolution, actual transmission speed and time will vary based on line conditions.

<sup>8</sup> Available with package. See your local Authorized Sharp Dealer.

<sup>9</sup> Upgrades U model to N model functionality

